

# Yellowstone County Continuum of Care (CoC)

The **MISSION** of the Continuum of Care is to create sustainable pathways to safe and stable housing for people who are at risk of or actually experiencing homelessness in Yellowstone County.

## WHO WE ARE

A coalition of leaders joining forces to

**Re-Imagine Our Homeless Response!**

## WHAT WE DO

Continuum of Care Leaders have joined forces to:

- **Change the Status Quo** of how we address homelessness from isolated and competitive to coordinated and effective.
- **Assess & Plan** together to create effective and efficient action that combines our strengths. A strategic plan was adopted in early 2021.
- **Share Data** in meaningful ways to guide action. Current data sharing includes a Data Dashboard and use of the Pathways system.
- **Optimize Efforts** by working together in a manner that combines our strengths, reaches more people, and saves money.

## Priority Projects

Collaborating to serve the most vulnerable:

- **Off The Streets Shelter & Q/I:** Provided a low-barrier shelter and quarantine site to address the COVID-19 pandemic.
- **Coordinated Entry System:** Brings agencies together to increase access, align services, prevent duplication, and prioritize the most vulnerable.
- **Diversion Fund** – Provides financial support to prevent homelessness.
- **Housing is Healthcare:** Creating a system to identify and provide supportive services for the highest utilizers of services.
- **Braiding** with aligned community efforts such as Substance Abuse Connect, Community Innovations

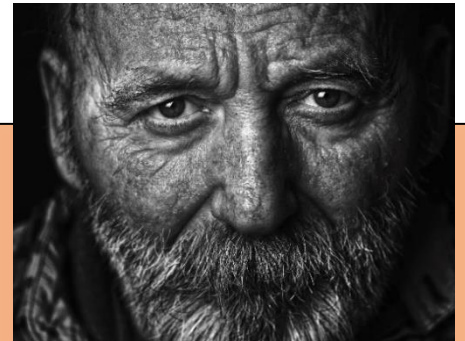
## KEY COC PARTNERS

**Leadership Team members include:**

Alternatives Inc. – Besaw Integrity Consulting – Billings Clinic – Billings Fire Dept. - Homefront (Housing Authority of Billings) - City of Billings – CLDI - Community Crisis Center – District 7 HRDC – Downtown Billings Alliance – Family Promise - Mental Health Center – MT Dept. of Corrections - MT Rescue Mission - Probation & Parole Division – Rimrock Foundation – RiverStone Health – Salvation Army - St. Vincent Healthcare – St. Vincent DePaul - Substance Abuse Connect - Tumbleweed – Volunteers of America (VOA) – YWCA Billings – Yellowstone County.

United Way of Yellowstone County Serves as the Backbone

**Financial Support By:** St. Vincent Healthcare Foundation – RiverStone Health – MT Healthcare Foundation – HomeFront - HRDC – CoC Partner Agencies – JP Morgan Chase – Yellowstone County - Philipps 66 – SCL Health MT Mission Fund of the MT Community Foundation – Billings Community Foundation – The Dennis & Phyllis Washington Foundation - Community Donors



## Successes

**Over 20** Organizations  
Committed and Participating

**Over 2,000**  
Persons served and supported  
through Coordinated Entry

**Over 300** Persons  
received shelter or quarantine  
during COVID-19 pandemic.

**Over 100** Persons  
maintained or regained housing  
through the Diversion Fund.

**Access** to Services  
increased

**Coordination and  
Data** sharing among  
agencies increased.